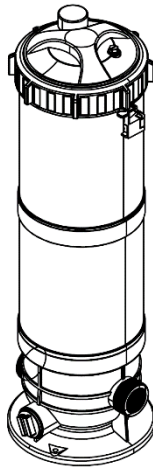




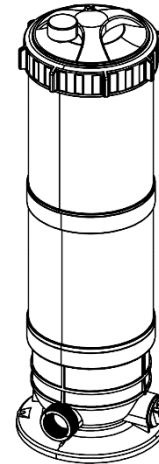
EASY, AFFORDABLE POOL CARE

CFX SERIES CARTRIDGE FILTERS

Instruction manual

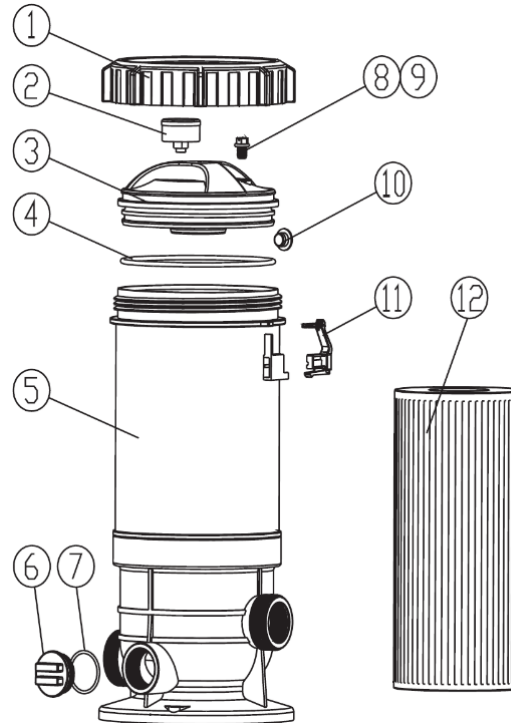


HY-CLOR
178 Power st
Glendenning
NSW 2761



REPLACEMENT PARTS

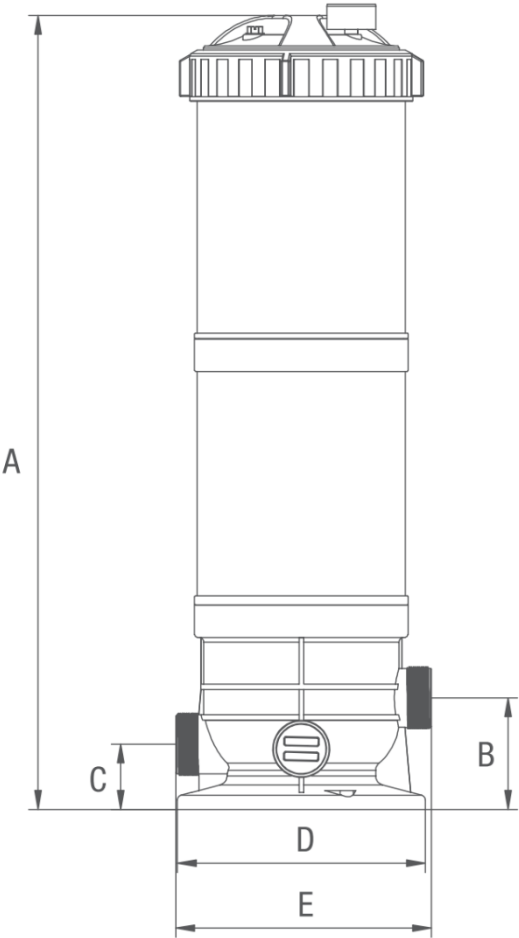
No.	Description	QTY
1	Locking Ring	1
2	Pressure Gauge	1
3	Lid	1
4	Lid O-Ring	1
5	Body CFX-50/CFX-75/CFX-100	1
6	Drain Plug	1
7	Drain Plug O-Ring	1
8	Air Release Valve	1
9	Air Release Valve O-Ring	1
10	Safety Plug	1
11	Locking Latch	1
12	Element CFX-50/CFX-75/CFX-100	1
other	Union Set 40mm PVC	2



FILTER SPECIFICATIONS

MODEL NUMBER	CFX-50	CFX-75	CFX-100
A	708mm	809mm	999mm
B	120mm	120mm	120mm
C	70mm	70mm	70mm
D	266mm	266mm	266mm
E	276mm	276mm	276mm

MODEL NUMBER	CFX-50	CFX-75	CFX-100
EFFECTIVE FILTRATION AREA	50ft	75ft	100ft
DESIGNED FLOW RATE	190LPM	265LPM	380LPM
MAX WORKING PRESSURE	50PSI 3.5BAR	50PSI 3.5BAR	50PSI 3.5BAR



FILTER LOCATION

Before beginning the installation process, it is important to determine the location of your pump and filter. If they will be positioned above the water line, a self-priming pump must be used. Self-priming pumps have the ability to lift water from a lower level and prime automatically.

Follow these steps for a successful installation:

1. Positioning the Filter:

- Plumbing fittings can cause resistance to water flow, so it is recommended to place the filter as close to the swimming pool as local codes allow.
- Minimize the number of fittings to maintain optimal water flow.
- Choose a well-drained area that will not flood during rain.

2. Setting Up the Filter:

- Place the filter on a solid and level surface.
- Ensure easy accessibility to the filter, pump, drain, and pressure gauge for convenient operation.

3. Draining Capability:

- Position the filter in a way that allows the tank to drain by gravity when needed.

4. Sun Protection:

- If possible, consider placing the pump and filter in a shaded area to shield them from continuous and direct heat from the sun.

By following these installation guidelines, you can ensure an efficient and convenient operation of your pump and filter system.

INSTALLATION

To install your pool system, follow these steps:

1. Plumbing Connections:

- Use 40mm UPVC Class 9 or 12 Plumbing Pipe.
- Use provided unions for permanent connections.
- **Inlet from the pump is the higher of the two-barrel unions (marked) from the pump.**
- **Return is the lower of the two-barrel unions (marked) to Pool.**

2. Valving Suggestions:

- Use ball valves where/if needed.

3. Water Flow Control:

- Provide desired control of water flow from pool to pump and filter, and back.
- Install valves to prevent back-flow when the filter is below water level.

4. Pool Suction Plumbing:

- Connect pool suction plumbing between skimmer, pool outlet, etc., and the pump.

5. Pool Return Plumbing:

- Install pool return plumbing for proper water circulation back to the pool.

6. Pressure Gauge Installation:

- Apply Teflon tape to gauge threads.
- Screw the gauge carefully into the threaded hole in the filter head.
 - i. Note: Both threaded holes on the lid can be used.
 - ii. It is advisable to choose a location that is easily viewable for maintenance purposes.
 - iii. The other threaded hole to be used for the air Relief Valve.

7. Filter Drain Plug and Air Relief Valve:

- Use a filter drain plug for complete filter draining.
- Utilize the manual air relief valve to bleed off unwanted air during filter startup.

8. Leak Check:

- Check for joint leaks before operating.

9. Pump Instructions:

- Refer to the pump instruction booklet for pump information and priming.

By following these installation steps, you can ensure a successful setup of your pool system.

STARTING THE CARTRIDGE FILTER

To start your cartridge filter, follow these steps:

1. Filter Drain Plug and Valve Setup:

- Ensure the filter drain plug is closed.
- Open the manual air relief valve a few turns.
- Open the suction and return valves if applicable.

2. IMPORTANT: Valve Precaution:

- **CAUTION:** Before starting the system, make sure all suction and discharge valves are fully open.
- Failure to do so can result in severe personal injury or property damage.

3. Locking Knob:

- Ensure the locking knob is securely tightened. Hand-tighten with only slight pressure.

4. Pump Startup:

- Stand clear of the filter.
- Prime the pump as per the manufacturer's instructions.
- Start the pump.

5. Air Venting:

- Any air trapped in the system will automatically be vented to the pool and out of the air relief valve.
- Close the air relief valve once air has been vented and water starts to come out.

By following these steps, you can successfully start your cartridge filter.

CARTRIDGE CLEANING PROCEDURE

When the filter gauge is reading 50-70kpa above the normal pressure reading. Cleaning the cartridge is required.

1. Switch off the pump.
2. Close Isolating valves on suction and discharge lines where/if fitted.
3. Open the Air Bleed valve on the filter lid.
4. Unscrew the locking ring and remove the filter lid.
5. Lift out the cartridge element.
6. In most cases the element can be easily cleaned with a garden hose, using a high-pressure fitting (not a pressure cleaner)
 - a. Note: if the pressure does not go down after cleaning you may need to replace the

cartridge. Cartridges have a normal life span of two years with frequent cleaning.

- b. Algae, Sunscreen oil, and body oils can form a coating on the cartridge filter. You may require the use of a degreaser product to clean the cartridge element before use follow the degreaser instructions.
7. When the element is clean place it back inside the filter and push it so it firmly sits in the raised section in the middle of the tank.
 8. Place the lid back onto the cartridge filter making sure the raised section on the underside of the lid is firmly pushed into the top of the elements hole.
 9. Screw the Lid down firmly.
 - a. DO NOT OVER TIGHTEN
 - b. It will self-lock when it is tight enough.
 10. Turn the pump on while opening the air release valve slowly and close it when water starts to come out.
 11. Make a note of the new pressure.
 12. Repeat cleaning when the filter is above 50kpa from the reading.

WARRANTY TERMS AND CONDITIONS

Our goods come with guarantees that cannot be excluded under the Australian Consumer Law. You are entitled to a replacement or a refund for a major failure and for compensation for any other reasonably foreseeable loss or damage.

Please read these warranty terms and conditions carefully. A failure to comply with these terms and conditions may affect any claim on warranty you may have on a product.

WARRANTY GENERAL CONDITIONS

All products provided by HY-CLOR AUSTRALIA PTY LTD are warranted for defined periods of time (refer to the product table).

All mechanical swimming pool products supplied to consumers by HY-CLOR are to be installed or used in the manner they are manufactured for only.

Warranty may be voided if the product or products claimed by the consumer under warranty have been

used for purposes other than their designed or manufactured purpose.

Where applicable, products supplied by HY-CLOR come with operation and installation manuals. All care must be taken to install and operate the products according to these instructions. Failure to install or operate these products in accordance with these instructions may void the warranty.

The chemical balance of the swimming pool water plays a significant part in the operational life of all swimming pool products, HY-CLOR recommends regular water testing using an approved swimming pool test kit.

This warranty is valid for the original purchase and is not transferable. Keep your purchase docket, tax invoice, or receipt as proof of purchase, and as proof of the date on which the purchase was made.

Modifications to any electrical product provided by HY-CLOR products are covered by a twelve-month warranty unless prior written approval has been granted by HY-CLOR and has been carried out by one of its authorized agents. All electrical installations must be carried out by a competent licensed professional.

All pool filtration equipment including filters, pumps, and salt chlorinators, must be kept in a dry well-

ventilated area away from direct sunlight and in an area that is free from flooding or rain. This warranty does not cover normal wear and tear to the products or parts.

Please note O-Rings and pressure gauges are considered consumables and not covered under the Replacement warranty.

To make a claim please contact:

HY-CLOR AUSTRALIA PTY LTD

178 POWER STREET

GLENDENNING NSW 2761

FREE CALL NUMBER 5 DAYS A WEEK 1800 625 123.

FILTERS

Thermoplastic Sand Filters 19,22 and 24 inch

- 5 Years Full Replacement – Tank only
- 1 Year on Multiport Valve and all other components

Cartridge Filters 50sqft, 75sqft and 100 sqft

- 5 Years Full Replacement – Tank only
- 1 Year on all other components