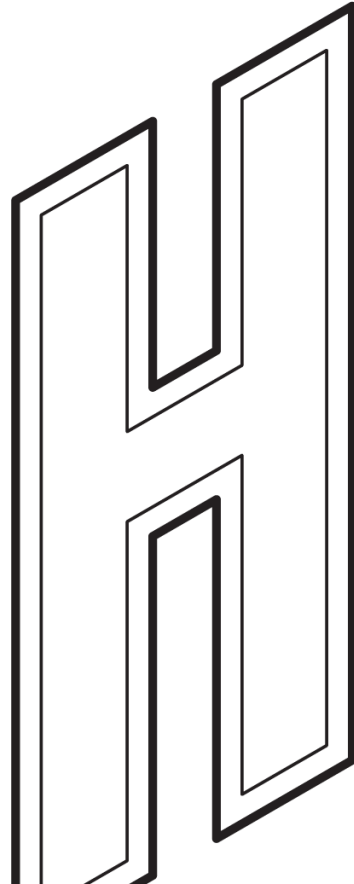




stainless steel pool cover roller

user manual



contents:

- 1 x frame (wheel assembly)
- 1 x frame
- 1 x threaded knob
- 1 x base frame (suite wheel assembly)
- 1 x base frame
- 2 x end cap (base frame)
- 2 x foot wheels
- 2 x t joiners
- 1 x crank wheel
- 1 x long hub
- 1 x short hub
- 1 x handle grip
- 4 x self-tapping screws
- 18 x pan screws
- 1 x small screw assembly
- 1 x medium screw assembly
- 4 x long screw assembly
- 2 x circlip
- 2 x foot wheel cap
- 1 x washer
- 1 x shift
- 8 x straps with male/female velcro
- 8 x buckle
- 8 x cover clip
- 4 x tube a - small diameter
- 3 x tube b - large diameter
- does not include pool cover

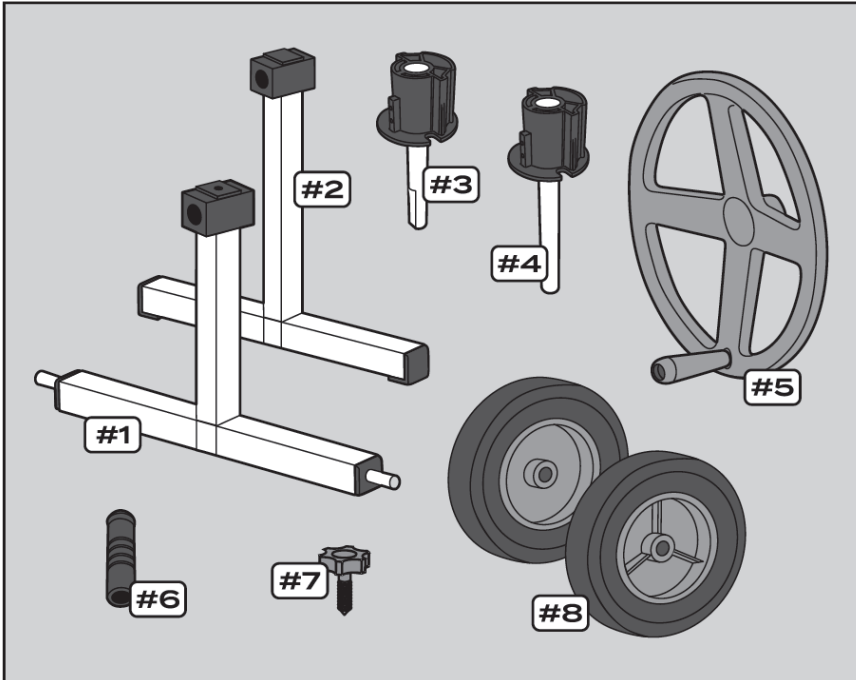
dimensions (assembled):

- width = 590 mm
- height = 645 mm

adjustable length:

- from 2.1 - 4.65 m

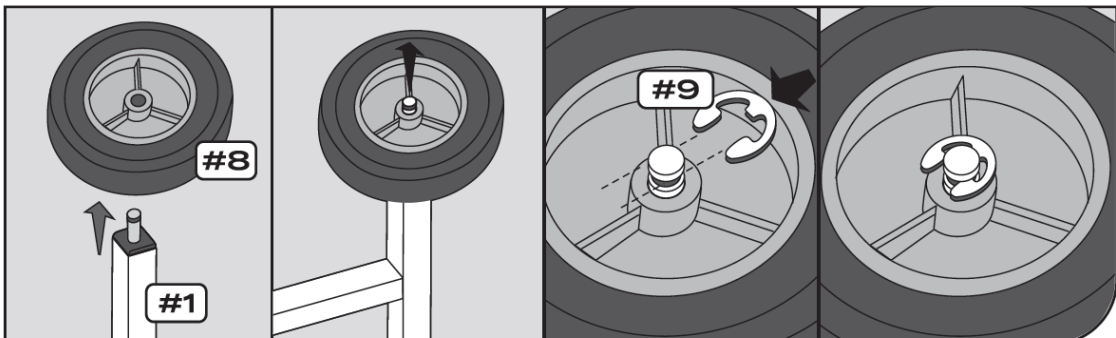
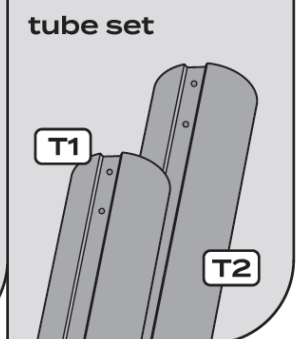
for in-ground pools



| ref. | qty. | description |
|------|------|--------------------------------|
| #1 | 1 | frame (for wheel assembly) |
| #2 | 1 | frame |
| #3 | 1 | short hub |
| #4 | 1 | long hub |
| #5 | 1 | crank wheel (with handle) |
| #6 | 1 | grip |
| #7 | 1 | threaded knob |
| #8 | 2 | wheels |
| #9 | 2 | wheel retaining rings |
| #10 | 1 | hex wrench |
| #11 | 1 | locking ring with set screw on |
| #12 | 6 | self-tapping screws |
| #13 | 18 | pan screws |
| #14 | 1 | set screw (for pan assembly) |

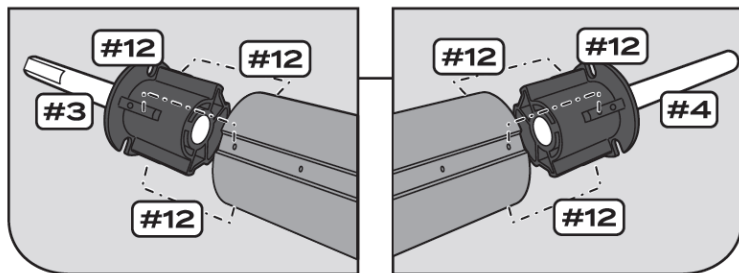
| strap set for grooveless tube set | |
|-----------------------------------|-------------------------------|
| S1 | 8 straps (with female velcro) |
| S2 | 8 stickers (male velcro) |
| S3 | 8 strap connectors with screw |

| grooveless tube set | |
|---------------------|-----------------------------------|
| T1 | 4 premium aluminium tube (type 1) |
| T2 | 3 premium aluminium tube (type 2) |



- slide the wheel #8 onto the axis of the frame #1
- put the retaining ring #9 over the wheel and align the hook end of the retaining ring #9 to the groove around the axis
- use a screwdriver to push the retaining ring #9 completely down into the groove of the axis of the frame #1
- make sure the retaining ring #9 is in place and the wheel is totally secured under the retaining ring #9 before the next step

3

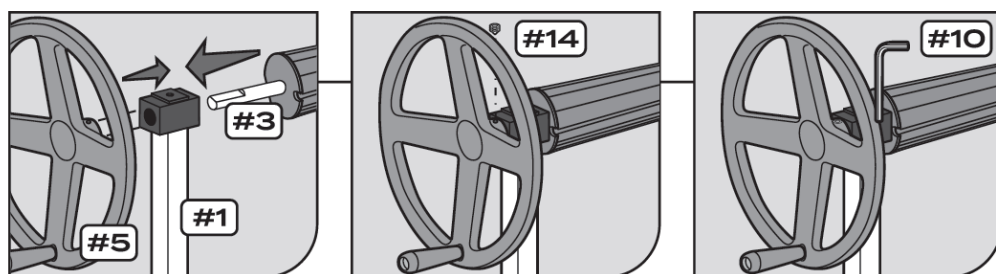


note: grooveless tube set has a diameter of 80 mm (3¼ inches)

the grooveless tube set consists of seven sections. the four **T1** tube sections have smaller diameters than the three **T2** sections. place the **T2** tube in the middle to connect **T1** tubes on each side:

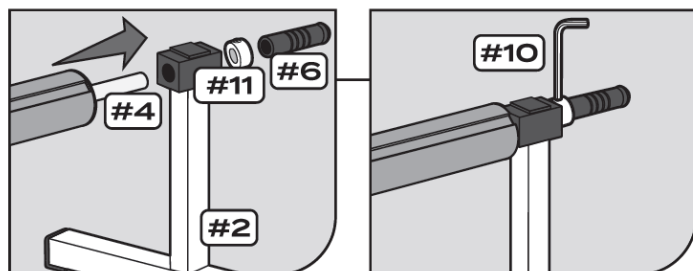
- align the groove on the hub with the pre-drilled holes on one of the **T1** tubes
- insert the short hub **#3** into one end
- secure the assembly with three self-tapping screws **#12**
- repeat the operation with the long hub **#4** into one end of another **T1** tube
- secure the assembly again with three self-tapping screws **#12**

4



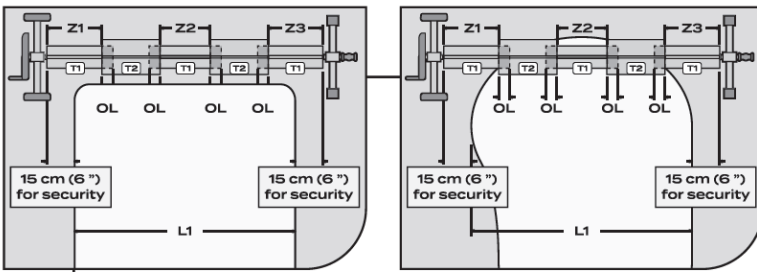
- insert the axle of short hub **#3** through the chamber on top of the frame **#1**
- align and slide the crank wheel **#5** onto the hub axle until it stops
- put the set screw **#14** on the hole of the crank and fasten it with the hex wrench **#10** to secure the crank onto the short hub

5



- insert the axle of long tube hub **#4** through the chamber on top of the frame **#2**
- slide the lock ring **#11** onto the axle until it reaches the chamber as shown in the diagram
- slide the grip **#6** onto the hub until it stops next to the lock ring
- use the hex wrench **#10** to tighten the set screw on lock ring **#11** accordingly

6

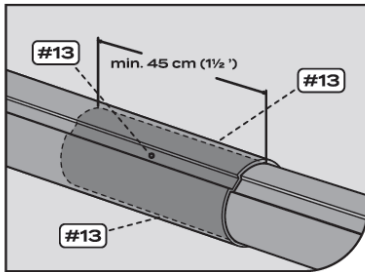


- measure the maximum width of your pool (between the pool's inner edges) = L1
- insert the **T1** tubes into the **T2** tubes, and slide them until you have the required size + 15 cm (6 inches) margin on the right and left sides of L1, as shown
- ensure that the **T2** tube is exactly centred between the tube **T1**, and and that Z1 and Z3 are equal
- also ensure that there is a minimum tube overlap OL of 45 cm

tip: after figuring out the required overlapping that achieves the total length i.e. L1 + 30 cm (12 inches), measure and use a pencil to mark a line on the tube **T1** as a finishing line for overlapping

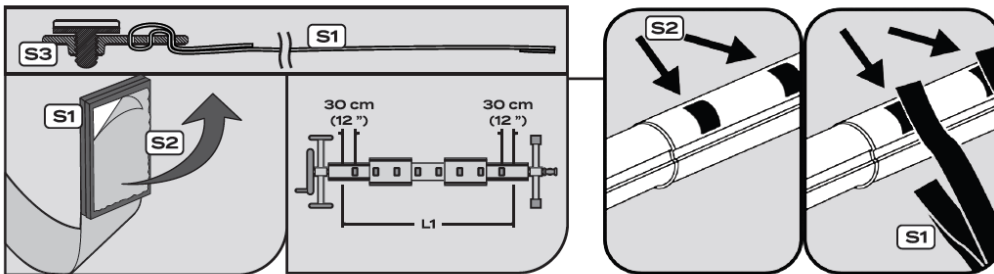
maximum loading weight of wet solar cover = 30 kg (66 lb) on maximum tube set span

7



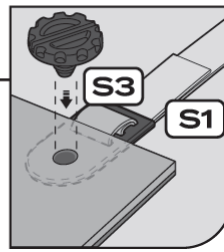
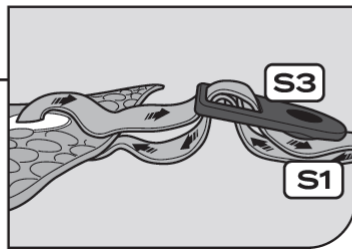
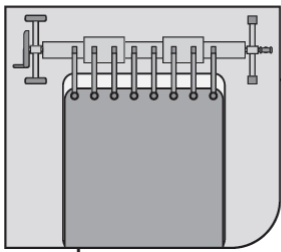
- to connect the tubes, align and slide the smaller tube **T1** into the bigger tube **T2** until the required overlapping is achieved
- secure the tube connection by fastening three screws #13 into the pre-drilled holes on tube **T2**

8



application of strap set on grooveless tube set

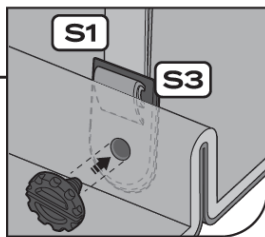
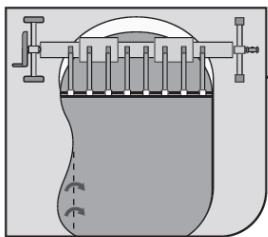
- tie **S3** on the straps **S1** as shown
- peel off the protective layer from the velcro sticker **S2**
- stick together with strap **S1** onto the tubes in a straight line, at equal intervals over the length L1 as shown in step 6



9

for rectangular in-ground pools

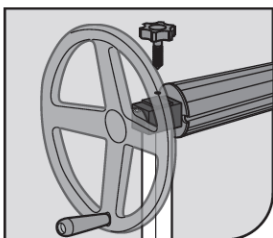
- open cover over the pool and set into position
- if you have grommets on the cover, attach **S3** to it or put strap **S1** through the grommet and then secure with **S3** (without the screw) as shown
- if there are no grommets, pinch a hole and then attach **S3** through it
- ensure the screw on **S3** is fastened securely
- make sure to position **S3** along the cover at the same intervals as the straps are attached to the tube
- you can adjust the length of the strap by adjusting the strap on the connector **S3**
- ensure that the length of the straps allows the cover to lay flat on the pool to prevent wind from getting under the cover



10

for round or oval in-ground pools

- open cover over the pool and fold it as shown
- pinch holes into the cover 2.5 cm away from the edge, keeping the same regular intervals as on the tubes
- attach **S3** to the pinch holes, and ensure that the length of the straps allows to the cover to lay flat on the pool to prevent wind from getting under the cover
- ensure the screw on **S3** is fastened securely
- you can adjust the length of the strap by adjusting the strap on the connector **S3**



11

locking the reel crank wheel **#5** in position

- fasten the threaded knob **#7** to the hole on top of frame **#1**

notes:

**HY-CLOR AUSTRALIA PTY LIMITED
ABN 81 000655 381**

**178 Power Street
Glendenning NSW 2761 Australia**

**all enquiries:
AU 1800 625 123, NZ (09) 973 2477
or help@hyclor.com.au**

visit us at hyclor.com.au